

## Addresses

**State Office for Occupational Safety, Consumer Protection and Health (OSH Authority)**

### Headquarter and Central Division

PF 90 02 36, 14438 Potsdam

Horstweg 57, 14478 Potsdam

Telefon: +49 331 8683-0

Telefax: +49 331 864335

E-Mail: [lavg.office@lavg.brandenburg.de](mailto:lavg.office@lavg.brandenburg.de)

Internet: <http://lavg.brandenburg.de>

### Regional Division East

Postfach 10 01 33, 16201 Eberswalde

Authority center of Eberswalde, House 9

Tramper Chaussee 4, 16225 Eberswalde

Telefon: +49 331 8683-280

Telefax: +49 331 8683-281

E-Mail: [office.ost@lavg.brandenburg.de](mailto:office.ost@lavg.brandenburg.de)

Regional Division East, Office Frankfurt (Oder)

Postfach 13 45, 15203 Frankfurt (Oder)

Robert-Havemann-Str. 4, 15236 Frankfurt (Oder)

Telefon: +49 331 8683-290

Telefax: +49 331 8683-291

### Regional Division South

Thiemstr. 105a, 03050 Cottbus

Telefon: +49 331 8683-380

Telefax: +49 331 8683-381

E-Mail: [office.sued@lavg.brandenburg.de](mailto:office.sued@lavg.brandenburg.de)

### Regional Division West

Fehrbelliner Str. 4a, 16816 Neuruppin

Telefon: +49 331 8683-480

Telefax: +49 331 8683-481

E-Mail: [office.west@lavg.brandenburg.de](mailto:office.west@lavg.brandenburg.de)

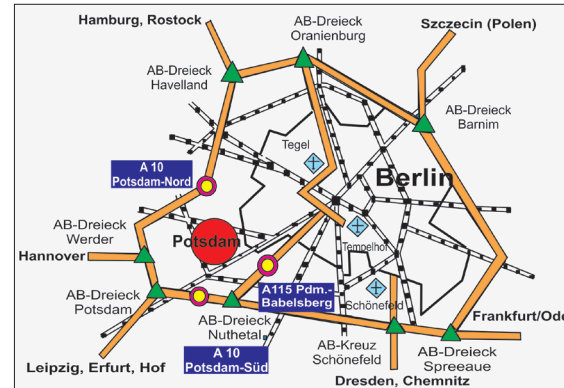
Regional Division West, Office Potsdam

Max-Eyth-Allee 22, 14469 Potsdam

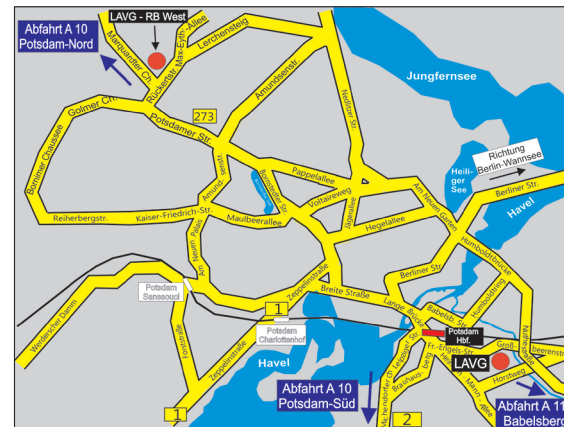
Telefon: +49 331 8683-490

Telefax: +49 331 8683-491

## How to find us



### Motorways



### Part of the City Map

### Imprint:

Landesamt für Arbeitsschutz, Verbraucherschutz und Gesundheit (LAVG)

Horstweg 57, 14478 Potsdam

Pictures: © LAVG

Edition: September 2017



Occupational Safety and Health



**State Office for Occupational Safety, Consumer Protection and Health**

**OSH Authority - About us**



## Tasks in the field of OSH

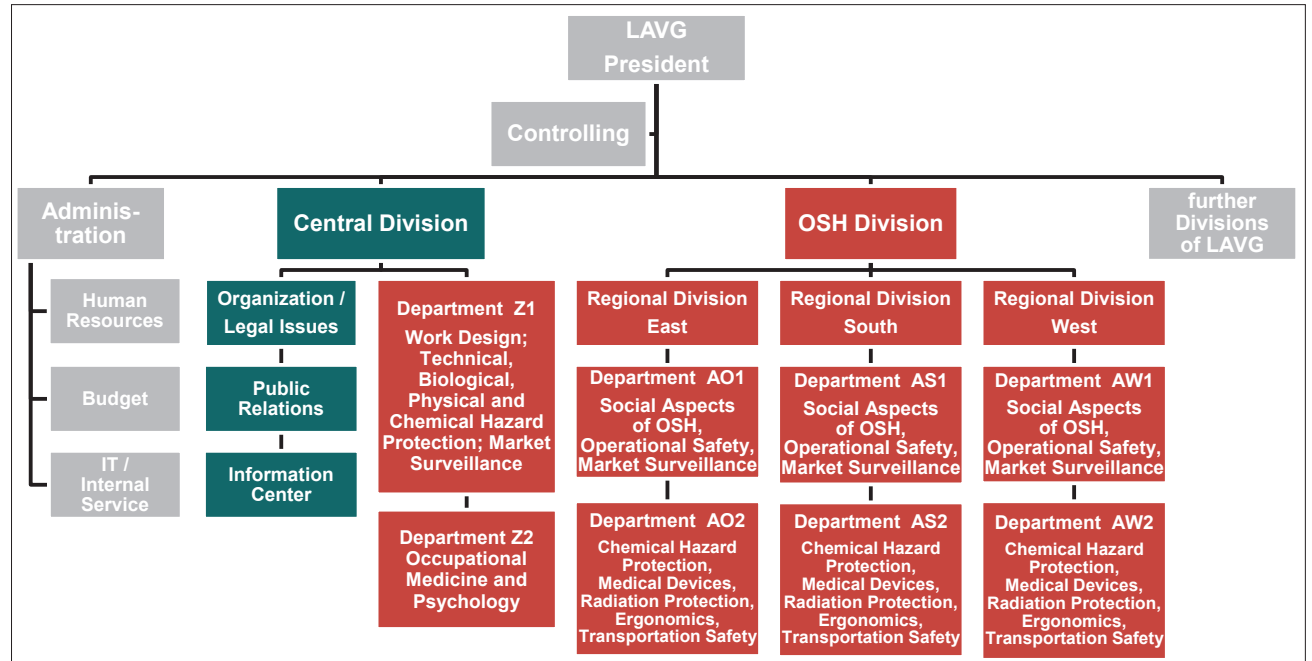
With the effect from 27 January 2016 the State Office for Occupational Safety, Consumer Protection and Health (LAVG) was established as a higher authority of Land Brandenburg in Potsdam. It originates from the former OSH Authority, which was merged with the two expert departments for consumer protection and health of the former State Office for Environment, Health and Consumer Protection. The LAVG is subordinated to the Ministry of Labour, Social Affairs, Health, Women and Family (MASGF) and the Ministry of Justice, Europe and Consumer Protection (MdJEV).

The **OSH department of LAVG** is the responsible authority for the enforcement of governmental regulations in the field of safety and health at work as well as for safe technical design. The LAVG advises employers, building owners, plant operators, members of the workers' councils and the staff advisory councils, producers, providers on the market and consumers. It supports them in recognising potential risks early enough and in initiating suitable measures for reducing or eliminating these risks. The basis is a comprehension in OSH, which follows the principles of people-friendly designed work.

Such a prevention-oriented acting not only enables the reduction of accidents and work-related diseases and therewith connected absenteeism. At the same time it also increases motivation and performance of employees, the productivity of enterprises and therefore contributes to the consolidation of Brandenburg as a business location.

For the enforcement of tasks companies and workplaces outside companies are visited. Producers, distributors and providers of products and operators of technical equipment and machines are reviewed and advised. Identified deficiencies are rectified by the authority. Moreover the regional divisions are responsible for giving permissions, licenses and allowances required by law in the field of OSH.

## Structure and further tasks of the OSH Authority



On the basis of the determined risk potential appropriate priorities in the supervisory strategy are implemented. The OSH authority is integrated into the building permit process to guarantee a preventive design of workplaces in compliance with OSH regulations, when workplaces are to be newly established or should be converted into a new use.

The OSH department consists of three **regional divisions (East, South, West)** of nearly the same size in five places of employment. They are supported by two expert departments Z1 and Z2 within the **Central Division**. **Department Z1** is responsible for an efficient management, coordination and quality assurance of the executive tasks and consultation. Guidelines and information material are designed, unsafe technical products are evaluated and information and sensitising measures are implemented. The department Z1 also

deals with market surveillance of product safety as well as energy efficiency and eco-design of products.

**Department Z2** is responsible for occupational medicine. They analyse work-related risks to health, clarify cause-effect relationships, support the company physicians and visit companies and workplaces regarding relevant issues connected to occupational medicine. They have an active part in the execution of the procedures in cases of occupational diseases.

The national liaison point of the German federal states with the European Agency for Safety and Health at Work in Bilbao is also integrated in the central division.

The **Expert Department 35** "Safety and Health at Work, Product Safety" in MASGF performs the tasks of the responsible supreme state authority in OSH.